

mortgagelink

Mortgages made easy

MORTGAGE LINK CROMWELL

Alisha Clark 027 626 9047

E: alisha.clark@mortgagelink.co.nz



Cromwell and Districts News

A division of Quantum Print Limited

Fun, friendship, food and flowers

By Jan Hawkins

The outside tables of Forage Café were a hive of activity on Saturday for the first of a planned series of 'Crop Swap' gatherings.

People arrived with their excess plants and produce, including jams, olive oil, peonies, herbs, salad leaves, and rhubarb.

There was an excited exchange of information, too, and contacts for surplus food about to ripen.

The idea behind the Crop Swaps, now spreading throughout New Zealand, was that people gather informally to share abundance, try new produce, avoid waste, and meet fellow gardeners and homemakers.

Connect Cromwell community liaison George Affleck thanked participants for joining in on 'this wild and windy morning'.

She said that the concept was about generous giving and mindful taking. She was "delighted" with the fabulous turnout.

"Toha atu; Toha mai – I share with you; you share with me."

Everyone agreed, as they gratefully took home their goodies to use or plant, that the event is sure to grow exponentially.

The next meets are planned for



Connect Cromwell Community Liaison George Affleck.

Photo Jan Hawkins

November 30 and December 14.

The Cromwell Crop Swap is facilitated by the not-for-profit organisation Connect Cromwell, which is keen for any groups or

individuals to run the events in the future for the benefit of the whole community.

Email with any enquiries to:
george@connectcromwell.nz

FOR ALL YOUR HOME DECORATING NEEDS

- Tiles
- Paint
- Curtains
- Flooring
- Giftware
- Wallpaper



Guthrie Bowron
Decorating Specialists

24 McNulty Rd • Cromwell Phone 03 445 1619



**first
national**
REAL ESTATE

Cromwell Real Estate Ltd
Licensed Agent REA 2008



5 4 3

\$1,395,000 incl GST (if any)

117 Neplusultra Street, Cromwell
Fabulous Home and Income

Jeanine Ellis

P: (03) 445 1748 M: 027 227 5468

E: jeanine@homesforyou.co.nz



www.homesforyou.co.nz

HEAVY TRAX HIRE CENTRAL MOTOR SPEEDWAY

SPECIAL FEATURE
HAYDEN PADDON
CROSSCART
DEMO

THURS, NOV 21
\$15 ENTRY

FEATURING

2019
Holden Trade Club
presented by
5000R SPEEDWEER
Valvoline

24 OF THE SOUTH & NORTH ISLAND'S TOP AND UPCOMING SALOON DRIVERS FIGHTING FOR PERSONAL AND ISLAND GLORY. SEE TIGER'S FORMER CADDY, STEVE WILLIAMS IN PERSON.

GATES 3PM // RACING 5PM
Trackside spectator parking. Family friendly prices. Food concessions. EFTPOS at gate.

SANDFLAT ROAD, CROMWELL
(OFF HIGHWAY 6 AT HIGHLANDS CORNER)

HEARTLAND technology

DYNAMIC DRAINAGE
SINCE 2007

• All Residential, Light Commercial Drainage
• Septic Tank Systems • Alterations
• Excavations • Free Quotes

M: 027 437 2468 | E: office@dynamicdrainage.co.nz
W: www.dynamicdrainage.co.nz

Rockburn Central Otago wins top award

By Jan Hawkins

Rockburn Central Otago winery has won the Champion Wine Award at New Zealand's largest wine awards, the New Zealand International Wine Show, against high-end wines in all categories and from all over the world.

Kingsley Wood, organiser of the awards for over 15 years, gathers some of the best wine judges in the country to select the winning wines.

Chief judge Ross Campbell is ranked as the most experienced wine judge in New Zealand. Rockburn won two gold medals in different categories – the champion pinot noir for their Pinot Noir 2017, and 'The Art' Pinot Noir 2016.

General Manager Rebecca Poynter was particularly pleased that 21 of the 36 Pinot Noir gold medals were awarded to Central Otago wines.

"This continues to cement this region as a consistent producer of New Zealand's premier Pinot Noir," she says.

"To then be awarded Champion Wine of the Show is a wonderful testament to Rockburn's winemaking and viticulture, and to its relentless commitment to premium quality."

Winemaker Malcolm Rees-Francis was equally as satisfied with the results. "We're very pleased with the performance

of the 2017 Rockburn Pinot Noir; the vintage was unusually challenging, with protracted flowering and huge variability with grape clusters at vintage. The wine certainly has an interesting story to tell!"

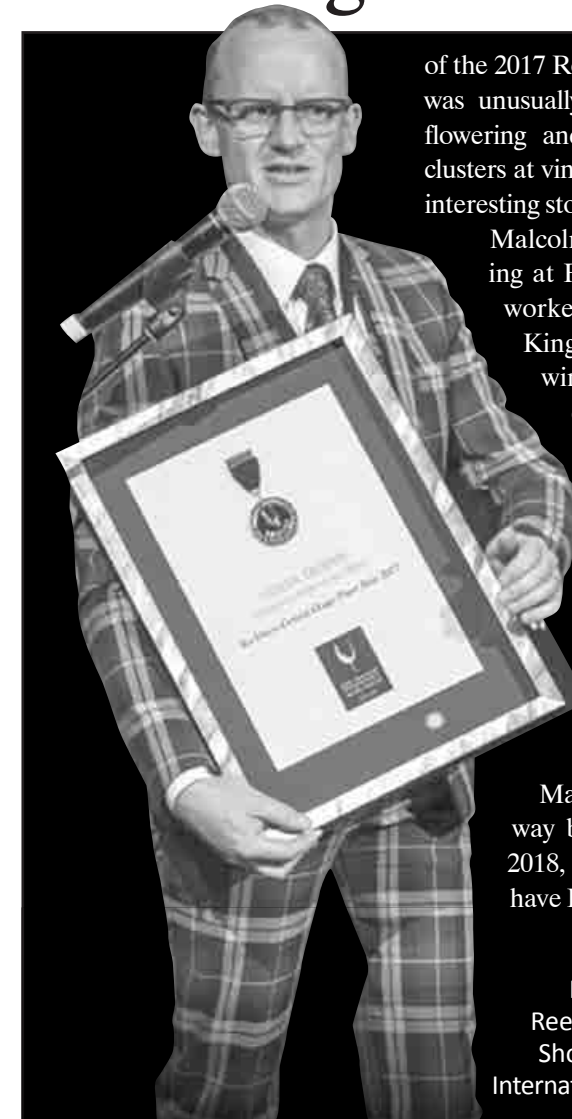
Malcolm found his love of winemaking at Felton Road winery, where he worked with viticulturist Gareth King before becoming assistant winemaker to Blair Walter and doing post-graduate study at Lincoln University. He has now been a winemaker at Rockburn for 15 years.

Malcolm was also thrilled to receive the champion award for pinot noir, as for years, it has gone to chardonnay wine.

Last year, his friend Matt Connell, of Cromwell's

Matt Connell wines, showed the way by winning the top award for 2018, and Malcolm is delighted to have Rockburn do the same for 2019.

Rockburn winemaker Malcolm Rees-Francis receiving the 'Best in Show' Award at the New Zealand International Wine Show. Photo Supplied



WELCOME STIHL TO CROMWELL!

If you live in Central Otago and need top-notch outdoor power equipment—look no further—there's now a Stihl Shop right on your doorstep. Otago Farm Machinery in Cromwell, the region's John Deere dealership, now also sells and supports the high-quality Stihl brand - and just in time for all of those outdoor projects you have planned! Call in and see the great range available instore NOW!

A GST FREE SPRING

STIHL RE 88 ELECTRIC WATERBLASTER
Rated Voltage 230V
Engine Power 1.65kW
Dry Weight 8.9kg
NOW \$257 GST

STIHL HS 45 600MM HEDGETRIMMER
Engine Capacity 27.2cc
Tooth Spacing 32mm
Dry Weight 5.0kg
NOW \$474 GST

STIHL FS 45 C-E LINETRIMMER
Engine Power 0.75kW
Engine Capacity 27.2cc
Dry Weight 4.3kg
NOW \$326 GST

Offers valid on selected products from 01 October 2019 - 31 December 2019 or while stocks last.

STIHL SHOP CROMWELL
12 Elspeth Street
Cromwell
03 445 1046

STIHL SHOP QUEENSTOWN
208 Glenda Drive
Queenstown
03 442 3896

STIHL SHOP
LOVE YOUR LAND

CROMWELL YOUTH TRUST

find your BALANCE
YOUTH DEVELOPMENT PROGRAMME

IS YOUR TEENAGER GOING INTO EXAMS THIS NOVEMBER?
WOULD YOU LIKE THEM TO LEARN TOOLS & STRATEGIES THAT DECREASES STRESS & ANXIETY AND IMPROVES THEIR MENTAL HEALTH?

Cromwell Youth Trust have developed a programme that can help teenagers feel more Confident, Build Resilience and Develop a Healthier Mind & Body. These four coping mechanisms include:
Fitness & Nutrition | Meditation | Yoga | Massage

FOR DETAILS PLEASE VISIT WWW.CROMWELLYOUTHTRUST.CO.NZ

gravelly supported by

RADIO CENTRAL

91.9 ALEX | CLYDE | CROMWELL

94.3 TEVIOT VALLEY

104.3 MANIOTOTO

Trades & Services

onpoint
WINDSCREEN • GLASS • TINTING

Your one stop glass shop

Specialises in:

- STONE CHIP REPAIRS • PET DOORS • GLASS SHOWERS
- TINTING • BALUSTRADES • DOUBLE GLAZING
- WINDSCREENS AND VEHICLE GROOMING

12A Chardonnay St, Cromwell
contact@onpointnz.com

www.onpointnz.com
0800 667 6468

Graeme Paul Motors

Specialising in hobby farm, orb and vintage road tractor repairs & service and a lot more



Call So 0274 374 973 or visit 13 McNULTY RD, CROMWELL

Haier **Fisher & Paykel**

Gary Anderson
ESTD 1989
SOLUTIONS FOR SOUND & VISION

52 The Mall, Cromwell
Phone (03) 445 1339

order online at www.GaryAnderson.co.nz

reytech
LIMITED

For All Your Electrical Requirements

Qualified • Certified • Reliable • Experienced

Bill 0274 705 204 or Stacey 0274 705 207 • PH 445 4309

HERE TO MEET ALL YOUR GLAZING NEEDS:

Contact Kris King to get it done!

DOUBLE GLAZE IT
GLASS AND GLAZING

- Single Glazing
- Broken Windows
- Sliding Door Issues
- Cat Doors
- Dog doors
- Double Glazing
- Aluminium Door Sticking?
- Retrofit Double Glazing
- Balustrading

phone/text: 398 7497 or 022 135 6997
e: kris@doubleglazeit.co.nz www.doubleglazeit.co.nz

Total
AUTO ELECTRICAL

11a Rogers Street, Cromwell
(03) 445 8072 027 858 1371
totalautoelectrical@gmail.com

Monday - Friday 8am - 5pm

YOUR SPECIALISTS IN:

- Air Conditioning Servicing & Repair
- FREE Battery Testing
- Auto Electrical Repair

YUASA
BATTERIES

BLACKDOWELL
TUBE & CLIP SCAFFOLDING LTD

Harry 027 835 0057
blackdowellscf@outlook.com

Courtney 027 716 9212
courtney@atdroofing.co.nz

MOBILE SCAFFOLDING PRICE LIST:

	2M	4M
1 day:	\$95.00+gst	\$125.00+gst
3 days:	\$142.50+gst	\$187.50+gst
7 days:	\$190.00+gst	\$250.00+gst

FREE DELIVERY IN CROMWELL

GOLDFIELDS
ELECTRICAL

Delivering professional electrical services throughout Central Otago including

- [Renovations & Extensions
- [Design & Install [Data
- [Horticulture [Heatpumps
- [Audio & TV

2A Ree Crescent, Cromwell P: 03 445 3793
admin@goldfieldselectrical.co.nz www.goldfieldselectrical.co.nz

MASTER ELECTRICIANS

Cromwell Family Practice

Cromtrade, 2 McNulty Rd, Cromwell, Central Otago

P: (03) 445 4666
Fax: (03) 445 4673
On Call 24 hrs

info@cromwellfamilypractice.co.nz

HOURS: 8.30am - 5.30pm
Monday - Friday

grow
irrigation

Residential & Lifestyle Irrigation Systems

0800 200 476
growirrigation.co.nz

Design Service Installation

Call in and see "The Collision Repair Experts"

Lumley

CROMWELL COLLISION REPAIR

www.cromwellcollision.com

Ph/Fax 03 445 0930 Mob: 027 530 1326 94 Gair Ave, Cromwell

Get your business noticed.
Place your advert here

Cromwell News
and Districts
A division of Quantum Print Limited

Contact Jo: 03 445 0443 or email: jo@quantumprint.co.nz

Cromwell Winery's 'Rose 2019' wins gold

By Jan Hawkins

The New Zealand Wine Awards dinner was hosted in Blenheim on November 16 this year - an evening to honour the talented people making up the diversity of the New Zealand wine industry.

Local winery Wooing Tree received one of four medals given to the Rose category, for their Rose 2019.

Wooing Tree Marketing & Promotions Elise Crossman is especially proud to have won in the Rose category.

"Our Blondie is our most popular wine, and our Pinot Noir is our past award winner, but the Rose is one of the smaller productions of the winery."

All three wines are made from Pinot Noir grapes, but it is all in the timing of how long the skins are left in with the pulp.

The Pinot Noir allows the skins to soak for a long time, the Rose for a short, and Blondie for a very short time.

Rose, along with Pinot Noir, was part of the first vintage in 2006, and Elise is not surprised that their Rose is now attracting the judges' attention, as it is increasing in popularity.

"We went up against a lot of large vineyards, especially in the Marlborough area, and to come out with a gold medal in the top four Roses is pretty exciting and humbling for a small, family vineyard," says Elise.



Elise Crossman, Marketing and Promotion, Wooing Tree Winery, with the 2019 Rose. Photo Supplied

Calling all young entrepreneurs!

Editorial Supplied

The Cromwell Farmers' and Craft Market invites all young entrepreneurs aged 5 to 17 to "set up shop" at the Young Entrepreneurs Market on Sunday, 8 December.

"This will be our first Young Entrepreneurs Market, expanding on our long-running kids' craft market," says Peter Brass, chairperson of the market.

"We love hosting these special markets as they give kids the opportunity to try their hand at being business owners."

To fit into the ethos of the regular market, all items sold will need to either locally produced or hand-crafted.

In addition to teaching children the art of producing products that the public would want to buy, the market also teaches the fundamentals of marketing, sales, and budgeting for business.

All young people interested in having a stall at the Young Entrepreneurs Market on Sunday, 8 December are asked to send an email to: cromwellmarketnz@gmail.com

OBC

ONSITE BLIND CLEANING & REPAIRS CENTRAL OTAGO

There must be a better way!

P: (03) 443 7664
or: (03) 449 2922
E: obc.centralotago@yahoo.co.nz
www.obccentralotago.co.nz M: 021 02444665

BEV'S HAIR 4 U
MOBILE HAIRDRESSER

No stress, no hassle, just sit back & let me come to you!

PH: 027 347 7122
OR 03 445 4229

New 360 imagery of local Central Otago experiences

Editorial Supplied

Tourism Central Otago has partnered with Google New Zealand to capture 360-degree panoramas of several prominent Central Otago trails and attractions - with imagery captured in May and June now available on Google Street View for everyone around the world to see.

Through the support of local businesses and organisations Tourism Central Otago was able to take the Google Street View Trekker into some really interesting locations.

These include a lap of Highlands Motorsport Park, along the length of the Roxburgh Gorge Trail (including the boat trip), through an orchard tour at Jackson Orchards, around the Cromwell Heritage Precinct and even up to the iconic Alexandra clock on the hill.

"The ability to use Google Street View to inspire exploration gives another way for us to connect people to our unique landscapes, and hopefully help encourage them to come and experience the region first hand," said Antz Longman, Digital Marketing Manager for Tourism Central Otago.

Mr Longman said that the way people discover, research and book travel is constantly evolving, and Tourism Central Otago is working on several initiatives as part of the region's Tourism Strategy.

Alongside the Street View imagery, TCO is developing opportunities to upskill local businesses in using digital technology and social media, and to refresh how locals and visitors find out and feel about Central Otago in the digital space.

The main focus is a complete rebuild of the www.centralotagonz.com website, which is currently underway with an expected go-live date in March 2020.



Speedway promises to be one out of the box

Editorial Supplied

Speedway on a Thursday is not the normal, but then again, this Thursday's meeting at Heavy Trax Hire Central Motor Speedway promises to be one out of the box with racing from 5pm.

First off, 22 of the country's top saloon drivers will be competing in round one of the 2019 Holden Trade Club Saloon Speedweek, arguably the toughest series on the speedway calendar.

A four consecutive days endurance challenge that stretches driver skills and fitness, and the ability of crews to handle all night rebuilds and repairs.

Next up, New Zealand's and now Cromwell's own WRC star Hayden Paddon will be demonstrating the

Crosskart, a new class of dirt racer he's introducing to New Zealand. European WRC drivers use these 750cc lightweight (300kg) rear engine fliers to practise their gravel sliding skills.

It was while driving a Crosskart that Hayden could see their potential in New Zealand as a fast, exciting and relatively inexpensive race car for hill climbs, auto cross, car club events and very possibly speedway.

There's also a chance Hayden will get behind the wheel of a sprint car for his first ever drive of speedway's fastest class.

Speedway promoter Jason Scott reports there will be at least 14 sprint cars racing on Thursday evening with other support classes to keep everyone entertained.

As the new 2020 venue, Highlands gives the flexibility to combine grass roots wool craft and the glamour of a world class fashion design event.

Pictured from left are committee members Mary Hinsien, Dayna Paterson, Amy Delport and Victoria Ravenscroft (Chair).

Photo Supplied

WoolOn committee announces new venue

Editorial Supplied

The WoolOn Creative Fashion event committee is excited to announce Highlands in Cromwell as the new host venue for 2020.

"Highlands was very generous; the museum and motorsport park venue allows us the flexibility to combine grass roots wool craft and the glamour of a world class fashion design event", said WoolOn committee chair Victoria Ravenscroft.

WoolOn is Central Otago's iconic annual event showcasing wool design and artistry, and Ms Ravenscroft said the team had carefully considered a wide range of venues within the region.

The WoolOn team had been able to honour the event's Alexandra roots by

strengthening the partnership with Central Stories Museum.

Future opportunities were being planned for WoolOn Society members to access the historic garment collection and learn more about care and storage of wool garments, along with design and techniques through the years.

Central Stories museum and research co-ordinator Rachel Taylor said the museum was thrilled to be continuing its partnership with WoolOn.

"The WoolOn event demonstrates beautifully the relationship between design and industry in New Zealand. Wool speaks of a unique New Zealand identity and we are enthusiastic about continuing to support

and expand on the stories surrounding the creation of these garments."

The 2020 WoolOn Creative Fashion event is set to be held on 14th and 15th August.

Highlands Chief Operating Officer Josie Spillane said she was excited to have the facilities being used in such an innovative and glamorous way, as the new host of WoolOn.

"It's a unique way to showcase so much of what Central Otago has on offer and we look forward to working with the team to ensure the 2020 event is a resounding success for the region."

"We can't wait to play our part in this exceptional event."

ADAMS
The strength of many people

Providing Plumbing Maintenance Service
Plumbing • Gasfitting • Drainage • Electrical

P. 03 445 4916 • www.adamsnz.com

Next door to
LAUNDROMAT

PACIFIC LINEN

NEW SUMMER YARNS - JUST ARRIVED

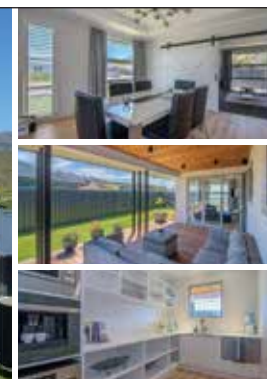
Ashford Opal Sock Yarns - variety of multi-colours & "sparkles"
Countrywide 100% Cotton Yarns - great for dish cloths & soft toys
DMC Demin Vintage Finish Dyed Cotton Yarns
- latest fashion knitting for summer

2e Traders Lane • Cromwell • Phone 03 445 1382 • www.pacificlinen.co.nz

Come and see what
everyone's talking about.



House
and Land
Packages
Available



Visit our show home: 5 Parkburn Drive,
Pisa Moorings, Cromwell. Ph: 03 445 0790

Open hours: Wednesday, Thursday, Friday
& Sunday 1-4pm or by appointment.

Contact Ferg Dardis on 027 627 5931

0800 VERSATILE versatile.co.nz

Versatile
Building Better

Central Lakes Upholstery Ltd.
♦ Upholstery ♦ Loose Covers ♦ Furniture ♦ Marine ♦ Automotive ♦ Boat Covers ♦ Blinds ♦ Headboards ♦ Fabrics
German Quality Tradesmanship
022 372 5649 • centrallakesupholstery@gmx.net • centrallakesupholstery.co.nz • 20b McNulty Rd, Cromwell

Time Out

Fill in grid so that every row, every column and every 3x3 box contains the digits 1 through 9

Grade: Easy

		6		5	2			
7		4	3		1			
8				4		7		3
4	9					3		7
	6	1		7				8
3		5		9	2	1		6
		2	6	3	8	5		1
		7		1	9			
5	1		7		4	8	6	

Grade: Hard

8	7					2		
		1		6	4	9	3	
	9						5	6
7		5	2					
		3						4
			7	2		1		3
	1	6			5		7	
	2			1				

Dining Guide

M

MOORINGS

RESTAURANT & EVENTS

OPEN 7 DAYS

Monday - Sunday

8am - Late

BREAKFAST, LUNCH,

DINNER, BAR SNACKS

& FUNCTIONS

BOOKINGS 03 445 4211

15 Periam Place, Pisa Moorings www.lakeresort.co.nz

Highlands

EAT & DRINK

WITH AN EXCEPTIONAL VIEW

Highlands

EXPERIENCE THE EXCEPTIONAL

CAFE OPEN 7 DAYS A WEEK FROM 10AM

• NEW MENU • OVERLOOKING

HIGHLANDS WITH A VIEW THAT

IS AS UNIQUE AS THE SURROUNDINGS

CORNER SH6 & SANDFLAT RD, CROMWELL

TEL: 445 4052

Get your restaurant noticed.

Place your advert here

Contact Jo: 03 445 0443 or email: jo@quantumprint.co.nz

Cromwell News

A division of Quantum Print Limited

Cromwell local becomes NZ 2019 Young Horticulturist of the Year

By Jan Hawkins

The winner of the 2019 Young Horticulturist of the Year, announced last Saturday at a gala dinner in Auckland, goes to local man Simon Gourley, of Domaine Thomson Wines.

The award celebrates excellence in people aged under 30, employed in the horticulture industry, and Simon represented the NZ Winegrowers sector in the competition.

It is the second year in a row that a Central Otago viticulturist has won the Young Horticulturist (Kaiahuone rangatahi o te tau) title. Last year's winner was Annabel Bulk.

It has involved months of hard work and intense competition to get to this point for Simon, who feels very privileged to have won the right to represent the wine industry, and then to bring the trophy back in Central Otago.

"I am very happy to have taken the award, not just as a viticulturist, but for Central Otago. It's been a goal of mine for a while now, and it means a lot," says Simon, now back at work at Domaine Thomson.

He studied a Bachelor of Viticulture and Oenology at Lincoln University and has since worked at Two Paddocks and Central Otago Wine Company before going to Domaine Thomson Wines, where he has been for the past 18 months as a viticulturist.

He also did a small stint as a vineyard hand in Australia for Treasury Wines.

Simon receives not only the winner's trophy but also \$7,500 from Fruitful



Central Otago viticulturist Simon Gourley, of Clyde, celebrates his Young Horticulturist of the Year award on Thursday.

Photo Sarah Weber Photography

supplies in travel and accommodation; \$1,000 from ICL Specialty Fertilisers; one-year membership of the NZ Institute of Agricultural and Horticultural Science, and a selection of Aorangi merchant pruning tools.

The travel award must be used for industry-related ventures, and plans for this are still tentative, though Simon has Austria in mind.

Arthur's

21 - 27 NOV 2019

IN CROMWELL, FOR CROMWELL

TICKETS \$15 - MEMBERS \$12 - UNDER 16 \$10

<div>SEAT AT TABLE</div> <div>THURSDAY, 21 NOV, 7:30PM</div> <div>- VERY POPULAR -</div> <div>A Seat at the Table</div> <div>100 MIN, EXEMPT</div>	<div>YULI</div> <div>FRIDAY, 22 NOV, 7:30PM</div> <div>NEW</div> <div>Yuli</div> <div>111 MIN, RATED M</div>	<div>OCEAN TO SKY</div> <div>SATURDAY, 23 NOV, 7:30PM</div> <div>Ocean to Sky</div> <div>108 MIN, RATED G</div>
<div>MET: TURANDOT</div> <div>SUNDAY, 24 NOV, 4:00PM</div> <div>FIRST OPERA OF SEASON</div> <div>TURANDOT</div> <div>182 MIN - \$32/\$29</div>	<div>MRS LOWRY & SON</div> <div>SATURDAY, 30 NOV, 7:30PM</div> <div>MRS LOWRY & SON</div> <div>91 MIN, RATED PG</div>	<div>SECRET SANTA 2019</div> <div>WED, 4 DEC, 6PM - \$20</div> <div>SECRET SANTA 2019</div> <div>BOOK NOW! SUPPORT LOCAL!!</div>

BOOK ONLINE OR CALL:

(03) 445-8175 - 027 554-5538

WWW.ARTHURSCINEMA.CO.NZ

CORNER DONEGAL & ERRIS, CROMWELL

Kindly sponsored by

Quantum

"Affordable housing" - we don't even know what it means

Every political generation has its buzz words and trendy concepts. Over the past 30 years, we've suffered the "more market" Chicago School economics as we now put up with the current sustainability 'woke' haze. It's faith, not facts that keep most of these political trends afloat. They are a cargo cult.

One such manifestation is the often-quoted desire for "affordable housing". No-one really knows what this means, and there's no national definition to help us.

But essentially it means that houses are too expensive to buy or rent – and someone should do something about it. Quite who that "someone" is remains a mystery.

The problem with house prices is that Cromwell homeowners actually love them. They like watching their capital gain go up every year. It makes them richer, and all they've had to do for it is to grow a year older.

The problem for people who don't own a home is that they can't afford either the deposit or the monthly mortgage or both. Homeownership in New Zealand is dropping like a stone as a consequence.

Of course, the sensible Germans look at us from afar and think we're all mad. It makes no financial sense to buy a house with a mortgage, they explain. Rent like we do. And save the money you'd otherwise spend to improve your lifestyle. Reserve Bank governor Don Brash attempted the same message, with zero effect.

The truth is that "affordable housing" means that existing taxpayers or ratepayers have to subsidise an incredibly small number of people into a house that they otherwise couldn't afford. Quite who selects these "deserving few" is another unexplained mystery.

House prices will always reflect the market. Employers are screaming out that they can't get skilled or even semi-skilled staff because of those prices. A few are petitioning local councils to intervene.

When the answer is very simple. Employers should pay more. You want the workers? Then pay wages and/or salaries that the market demands. Don't expect ratepayers to subsidise your wage bill. And that includes public sector employers.

But don't expect the ratepayer to subsidise minimum wage employers. That makes no sense at all.

If you'd like to contact Michael Laws, email him michael@themessage.nz

Indigo's largest exhibition at Central Stories Museum and Art Gallery

Editorial Supplied

Nine Central Otago artists exhibiting at one venue for the summer.

Indigo is an informal collaboration of award-winning Central Otago artists who mount group exhibitions of their work.

"The Indigo artists have known each other for a number of years as we all live in Central Otago.

We were looking for a new way to support each other and show our work together as a group.

As far as we are aware this way of working together is a first for the South Island and possibly New Zealand," said Megan Huffadine.

To date Indigo has curated two small exhibitions in the Otago region.

The upcoming Central Stories Museum and Art Gallery exhibition is providing the group with an opportunity to put together its largest show of works.

"The large spaces provided by the Central Stories means that each member will be able to exhibit a significant body of new work", said Shaun Burdon.

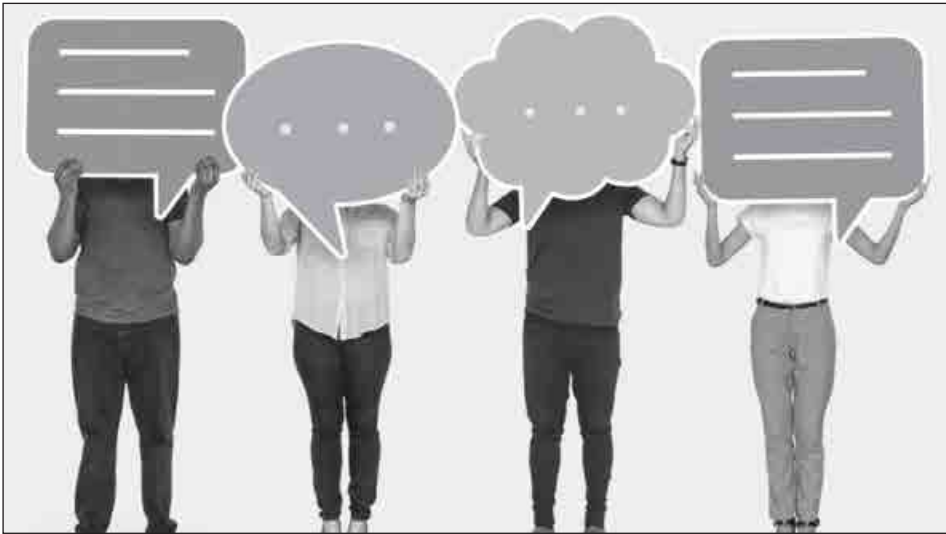
With nine artists and work ranging from cameraless photography and painting to ceramics and carved birds this show will fill the space with something for everyone.

Indigo is also providing the public with an opportunity to learn more about these artists. A varied programme of public



events will be running every Sunday the exhibition is on. These events range from floor talks, to artists at work and children's art classes.

Contact Central Stories Museum and Art Gallery for more information on these events.
P: 448 6230 E: sue@centralstories.com



Voter turnout showing how community-oriented we are

Editorial Supplied

Voting is closing for the Central Lakes Trust elections. Voter turnout to date is the highest it's been since the 2010 elections.

"People are really taking this seriously, I've been really encouraged by the amount of people that have taken the initiative to vote and make a difference in their community.

It is such a small thing to do, but has such a large impact," says CLT Chief Executive, Susan Finlay Voter turnout shows the support of the community for what is ultimately a community asset.

"With 25 candidates and only five to be elected, it means we really do need voter turnout to ensure we get the right people

to serve alongside our three appointed trustees for the next three year term," she says.

The trust plays an important role in our community, with a \$400 million investment portfolio, it is a significant community asset.

"Ultimately that asset is yours, and consequently, it's up to you to determine who will sit around the table," Finlay says.

Postal voting closes on the 19th, but this year you can vote online, go to clt.net.nz. Online voting closes midday on Friday 22nd November, and is fast approaching.

"If you haven't already, please do as the rest of your community has done, and have your say," urges Susan.

Time Out

wordfind

Spring Gardening.. Track them down in this word-search puzzle!

VEGETABLES	CROP	GARDENING
RHUBARB	SWAP	PRODUCE
FORAGE	RIPEN	WASTE
SPRING	SHARING	PEONIES

E U Z U U T N K E A D A
Z F X I P G N X D H F M
E T D S E R E J R T R R
C V G Y B H L A H U H A
N W Q U P O Z H U U O A
P X O V C I O E B X H S
C P P G N I R A H S S U
J V K R O E R S W F C C
I W U W Q B E A G R M X
E H D U H I P L N Z X I
V M G D N G F L I O R F
B G O Z G S V N E U T
R N E H A H E E E X G
F P F Q A I D G D T E N
B O E C K L K E R S H X
V J E M R I N T A A S S
L W T O T O E A G W H P
E M B X U S P B G Y N R
U A I Y N A I L L B E I
I D K X B A R E S C G N
F A L M D E C S A X A G
H U P R O D U C E X R F
T R S R Y F M F T G O S
V I F M N Y N S M C F F
Q F T V A Q B E X P J J

Draw

NETBALL DRAW FOR 25TH NOVEMBER 2019

6.15pm
Court 1 Ruggard v Team Greenie - Marie & Abby
Court 2 Tits & Bits v Hoops - Belz & Judge
Court 3 Highlands v Big Ballers - Karyn & TBC
Court 4 12 Times v Mad Dogz - Robbie & Pania
Court 5 Dirty Tactic v Untamed - Tash & Hannah
Court 6 Balls Deep v Year12 - Nicole & Shayla

7.00pm
Court 1 Time Out v The opposition - Karyn & Tash
Court 2 Se Wuck v Shaydens Team - Chelsea & Barnsey
Court 3 Shot Down v Central fitness - Teagan & Emma P
Court 4 Nets top model v Wannabees - Judge & Helen
Court 5 Cunning stunts v One hit wonders - Lori & Rach
Court 6 Cloud 9 v Heres the tea - Tia & Allannah

Draw & Results

Results

RESULTS MONDAY 18TH NOVEMBER 2019

The Opposition 28 Hoops 8 **POM** Pania
Tits & Bits 17 Team Greenies 12 **POM** Lori
Dirty Tactics 16 Highlands 16 **POM** Liam
Balls Deep 22 Cloud 9 9 **POM** Shayla Tamakehu
Se Wuck 12 Year 12 8 **POM** Levi

Results

Central Fitness 12 The Wannabees 6 **POM** Emily
Time Out 20 Ruggard 6 **POM** Boof
Mad Dogz 20 Big Ballers 12 **POM** Jack
12 Times 17 Untamed 9 **POM** Emma Paul
Shaydens Team 24 Heres the tea 4 **POM** Thornton
Shot Down 19 Cunning Stunts 8 **POM** Kate Andrews
One hit wonders 14 Nets top model 12 **POM** Vanecesa

Player of the night for the Bowen Central Voucher is Kate Andrews

Birthday Wishes

Having a birthday this week..

November 20 Ryan Sarginson Katie Lindsay	November 22 Mitchell Humphries Tim Campbell	November 24 Charles Milne Beau Brown
November 21 Harrison Whitley Caitlin Charleson Faith Courtney	November 23 Hunter de Vries Ben Coudret	November 25 Loretta Richards Tyler Buckingham

November 26
Jarnye Reid
Glenda Hall

This week's birthday winner is...
Tim Campbell

Congratulations Tim.
Call into the **Cromwell & Districts News** at **Quantum Print**.
2a Traders Lane, Cromwell to arrange collection of your cake*

Kindly sponsored by



*Cake to be collected before Monday 12pm. Recipient to live locally

Heat your home the easy way

Diesel pumped directly to your home tank

With a new mini tanker based in Cromwell we can service all your home heating needs.

BONUS! Discounted pricing.

BONUS! Eligibility for value-added benefits by becoming an RD Petroleum customer.

RD petroleum

South Island wide | 0800 44 00 14 | www.rdp.co.nz

CONTRAX CENTRAL LTD EARTHMOVING

John 027 273 2480
www.contraxcentral.co.nz

Like us on Facebook

• LAND CLEARING

• STOCK WATER

• ALL EARTHWORKS

O'CALLAGHAN & WALKER BUILDERS

Your home, your requirements, from concept to completion

W: www.ocwalkbuilders.net
E: oc.walkbuilder@xtra.co.nz

Licensed Builder Practitioners in Design & Carpentry

Ph: (03) 445 1972 Fax: (03) 445 1976
Showroom & Office: 18 McNulty Rd, Cromwell

Regular Meetings

Alcoholics Anonymous - Sat, meets Cromwell Community House, 8pm. Enq 445 1111

Alcoholics Anonymous - Thurs, 7pm at Cromwell Community House. Enq 027 445 0370

Bannockburn Creative Crafters - Every Saturday 11am. 1 Domain Rd. Enq welcome 445 8292

Barnardos Early Learning Centre Cromwell - Come and visit our beautiful Centre with an amazing outdoor area! We welcome all families from 8-5pm, wholesome lunches and great programmes offered for different age groups. 25A Gilling Place (beside Goldfields Primary School). E: cromwellelc@barnardos.org.nz or phone 445 4728

Connect Cromwell Drop-in Coffee & Chat - First Thursday of the month, 9.30am -10.30am, Forage Café, The Gate. Community projects, ideas and assistance. Contact: info@connectcromwell.nz, www.connectcromwell.nz

Creative Wool Crafters - Wed, 10am, at clubrooms, new members welcome. Enq 445 4727 or 445 3520

Cromwell Bowling Club - Social bowls are held twice weekly on Wednesday morning at 9.15am and Friday afternoons at 1.15pm throughout the spring and summer. All are welcome to attend including visiting bowlers and beginner bowlers. We can lend you bowls! If you plan to attend feel free to call the club on 445 0071, or just come along. Email: Cromwellbowls@gmail.com

Cromwell Bridge Club - Each Thurs evening in the Catholic Church Hall, Sligo St. Be seated for a 7.15pm start. Enq Murray 445 0890 / Wendy 445 0214

Cromwell Country Music Club - The first Sun of each month, public Walk Up Concert. Starts 2pm until approx. 5.30pm. Guest Artist & local musicians/singers. Town & Country Club, Melmore Tce., Cromwell. Free entry, everyone welcome. Enq Mike Hedges 03 445 4070

Cromwell Lake Dunstan Lions - 1st Thurs of month, 6.30pm. New members & visitors welcome. Enq Raewyn 445 1675 / Julie 445 0069

Cromwell Community Playgroup - Fri, 9.30-11.30am, Lowburn Valley Hall, 0-5yrs FREE, all welcome. Enq Anna 027 2694 778

Cromwell Community Patrol - Meets 2nd Mon of the month at the Cromwell Police Station at 7.30pm. New members very welcome. Enq: Euan:021 222 1719

Courses

DRIVETECH LTD

"TRAINING TOMORROW'S DRIVERS TODAY"

Forklift Endorsement (F & OSH)

Assessors with real industry knowledge and experience

DRIVETECH NOW OFFERS...

EWP, BESS, Telehandler

Dogman & Slinging

Gantry & Truck Mounted Crane (Hi-Abs)

NEED A LICENCE?

Heavy Traffic Classes 2,3,4 & 5

LICENCE ENDORSEMENTS

For Wheels, Tracks & Rollers,

Dangerous Goods, Vehicle Recovery,

Forklift (OSH & F) + Attachments

CAR / DEFENSIVE DRIVING

Qualified, friendly and patient trainers

Own Car or our Dual-controlled Automatic Car

Driving lessons at all levels (L,R, Full) & Assessments

NZTA Driving Instructor + NZIDE Members

DRIVETECH LTD

Ph: 03 445 4424 or 0508 2 DRIVE (37483)

or cell: 027 510 0684

Cromwell Depot 2b Traders Lane

E: info@drivetech.co.nz www.drivetech.co.nz

Cromwell Community Toy Library - Thurs & Sat 9.30-11am. Enq: Text/ph or text 022 4 TOY LIB (022 4869 542)

Cromwell & Districts Promotion Group - Monthly meetings every 1st Tues at Room 4, Otago Poly-technic. Enq: info@cromwell.org.nz

Cromwell Garden Club - Generally meet 2nd Tues of the month. Ph Karen Ross 021 0254 8004 / Mel 021 2330 280. New members welcome

Cromwell Karate - Tues & Thurs, Children 7-8pm, Adult-beginners, 8-9pm, Ripponvale Hall. Enq Dave 027 673 1438

Cromwell RSA - 2nd Thursday of the month, 3pm. Memorial Hall. Visitors welcome, Enq: Denis 445 0528 or Bill 445 0484

Cromwell Social Indoor Bowls - Come along to the Lowburn Hall on Tuesday afternoons and give Indoor Bowls a go!! New members most welcome. Meet new friends, have fun. Transport available. **Social Bowls sessions:** 1.30 to 3.30pm. Contact: Secretary Ev 021 136 1564 or 445 0809

Children's Story Time - Wednesday, Cromwell Library 10.30am - 11.00am for pre-schoolers. Must be accompanied by a caregiver

Cromwell Plunket Equipment Hire - Please ph/txt Gen 027 891 0559 to make an appointment

Cromwell Plunket - Rooms open during office hours. Groups & after-hours available with bookings only. Enq Kim 027 771 9831

Cromwell Plunket - Mon/Tues and Alternate Wed, Clinics Celine Collins 027 245 9183

Situations Vacant



Viticultural Specialist/

Vineyard Supervisor

Domain Road Vineyard in Bannockburn has an opportunity for a Vineyard Specialist with supervisory and machinery operating skills. This is a hands on role and candidates must possess the following skills/experience:

Extensive experience as a Supervisor in a quality vineyard and have excellent all round vineyard operator skills, achieving a high quality job efficiently throughout the whole season. The ability to communicate, train, motivate and supervise team members from various countries.

At least 3 years experience of tractor and specialist vineyard machinery operation and maintenance. This must include the operation of canopy sprayers, tractor mounted under vine weeders and forklifts. Hold a current Growsafe Certificate.

A proven mechanical knowledge of vineyard machinery, vineyard irrigation maintenance and scheduling programmes.

Ability to plan, co-ordinate and manage the day to day vineyard operations.

A first class work ethic, hard working, conscientious and have pride in all aspects of work.

Please email Fiona Johnman, at vineyard@domainroad.co.nz.


All applications must include a covering letter and CV and be able to provide references.

Cromwell Rotary - Meets 2nd and 4th Monday of each month at Town & Country Club, Cromwell. Visiting Rotarians and new members both welcome. President Neroli 027 434 6014, e: rotary.cromwell@gmail.com

Cromwell Scout Group - Scout Hall, Ortive St, Cromwell. Keas: School years 1-3 Thurs 6-7.00pm, Enq Andrew 027 703 0927. Cubs: School years 4-6 Wed 6.30-8pm Enq Robyn 027 677 4884. Scouts: School years 7-10 Tues 7-9pm. Enq Ben 027 208 1377. Venturers: School years 11-14 Mon 7-9pm Enq Justine 445 1227. Enq: secretary@cromwellscouts.org

Cromwell Walk Group - Fri, meets for morning or afternoon walks. Enq Morley 445 3624, or Dot 445 3311 E: cromwellwalkgroup@gmail.com

Situations Vacant



Crom-Dig is a dynamic firm growing rapidly, and we need a highly efficient and motivated

Office Administrator

to take this role to a new level.

This is a permanent part-time role (25 hours) for a highly motivated individual who can work in a team environment and autonomously, has initiative, with a passion for systems and business administration with the following attributes/key skills:

- Competent with Xero accounting, Microsoft Office and Google drive (preferably)
- Accounts Receivable/Accounts Payable
- A good working knowledge of Health & Safety policies and practices
- Previous administration/payroll experience
- Keep Company documents regularly updated
- Ability to multi-task and prioritise your workload
- Be punctual, reliable, have excellent time management skills, a positive attitude, & good sense of humour essential

Full on the job training will be provided. Rate negotiable depending on experience. Applicants for this position should have NZ residency or a valid NZ work permit.

If you wish to become a valued member of part of a great team, with interesting and varied work, please forward your details and CV to office@crom-dig.co.nz

PO Box 213, Cromwell 9342

Applications close 29 November 2019

Electrician

Need An Electrician? - Phone Murray George Electrical 027 433 3321

Garage Sale

Garage Sale - Erris Street, 9am. Camping gear, paddleboard, car jack trolley, art, amplifier & mic, life jackets, motorbike, kitchenware. Erris Street. 9am

Situations Vacant

Pure Pac Ltd is a state of the art Export Cherry Packhouse, operating for the first time in December 2017. Check out our story at www.purepac.nz

We have 2 positions available for
HR Assistants

One of these roles will be based at the orchard office and assist mainly the field staff. The other position will be based at the packhouse assisting staff working in and around the packhouse. The positions will begin start of December and finishing start of February.

Some of the responsibilities of the positions include:

- Using our specially designed system for the recruitment of staff
- Ensuring online paperwork is completed
- Induction of new employees
- Provide reports from the system as required by management
- Enter timesheets and reconciliation of data in system

These are varied roles and work closely alongside management to ensure the efficient running of the orchards and packhouse. The days can be long over cherry harvest so you mustn't be afraid of hard work.

If you are a friendly person that relates well to people, has an eye for detail and good computer skills then we want to hear from you!

Please email your CV and covering letter to hr@purepac.nz asap or email us with any further questions.

For Sale

Dry Poplar - \$70 per metre. Poplar logs. Ph: 021 215 9817

Just Fish - Is selling a selection of freshly frozen free flow Bluff fish on Thursday's 2pm-5.30pm opp. Anderson Park, Barry Ave Cromwell. Enq: 027 437 6657

Massage Therapy

Therapeutic Massage - Body maintenance and sports massage. 26 years' experience. Contact Vivienne 021 140 3301

Placing Kiwis & Backpackers into Horticulture & Viticulture

Seasonal Solutions Cooperative Ltd

Register at www.scco.co.nz to apply

SEASONAL STAFF REQUIRED

Pure Pac Ltd is a state of the art Export Cherry Packhouse.

We have the following positions available to start mid-late December till late January - early February. As Cherry Harvest is an extremely busy environment all the following positions require the following as well as job specific requirements as set out below.

- Able to work in a team environment
- Ability to work under pressure at all times
- Great communication skills both written and verbal.

TRACTOR DRIVERS

Responsibilities include:

- Unloading and loading truck and trailers
- Moving bins and equipment
- Carting fruit bins

We require:

- Previous tractor operating experience

QUAD BIKE DRIVERS

Responsibilities include:

- Driving Quad bikes with trailer to transport fruit around the orchard
- Moving equipment to set orchard up
- Assisting field staff with harvest activities

We require:

- Previous Quad Bike driving experience

TRANSPORTERS

Responsibilities include:

- Transporting fruit to packhouse with ute and trailer
- Transporting bins and buckets to the orchard from packhouse
- Orchard set up

We require:

- Clean drivers licence
- Experience driving a ute and trailer
- must be able to drive a manual vehicle

Situations Vacant

DELIVERERS WANTED

Every 2nd Thursday

We require reliable people aged 11 or over NOW!

Contact Harry
021 435 252

centralmagazinedistributors@gmail.com

GREAT RATE OF PAY!

FORKLIFT DRIVERS REQUIRED

Responsibilities include:

- Unloading and loading truck and trailers
- Moving bins and equipment
- Inwards stock control

We require:

- Current NZ Forklift Drivers licence and OSH certificate preferred or willing to sit required tests
- 2-3 years experience in a warehouse situations

QUALITY CONTROLLERS REQUIRED

Responsibilities include:

- Assessing quality of the fruit to export standard
- Ensuring compliances and protocols are being met
- Accurate record keeping
- Overseeing graders and training staff as necessary

We require:

- Preferably experienced in the horticultural industry
- Detail orientated
- Ability to analyse data and understand key aspects of quality control

To apply please email your C.V and cover letter to:

HR@purepac.nz by 24th November 2019

Regular Meetings

Cromwell Table Tennis - Mon night's 7-9pm at the Presbyterian Church Hall, Elsbeth St. All welcome, equipment provided. Call or text Tim for more info 0274 341 724. \$5.00 per night

Cromwell Youth Trust - Variety of services available including Drop-In Centre, Holiday programmes and more for Youth aged 11-18years. More info found at www.cromwellyouthtrust.co.nz

Dance Classes - Preschool 3+ years, beginners ballet 5+ years. From 9am Saturdays at Presbyterian Church. Enquiries 0215 75569 or anna@dancewanaka.co.nz

Embroiderers of Cromwell - Wed, 7pm, Tues, 9.30-noon, 44b Inniscort St. All welcome. Enq Lois 445 1526 or Yvonne 445 0682

Girl Guiding Cromwell - Pippins/Brownies/Guides. Age 5 to 12. Meet at Lowburn Hall. Thurs term times from 4pm Ph: Glenda 445 3624

Keep It Green, Cromwell - Please return your boomerang bags to Paper Plus, Cromwell Pharmacy, New World or Fresh Choice. 1000 bags made in this community (thanks volunteers) please keep them circulating

Keep It Green, Cromwell - CupCycling coffee cups - participating cafes are Nichols, New World, Fresh Choice, Cromwell Bakery, Dough Sea Dough - please support this awesome way to reduce waste in our town!

Ladies & Men's Social Tennis - Wed, 10am, Barry Ave. Enq Ros 445 0754 or Dennis 027 2355 777

Meals for Mums Cromwell - Providing home cooked meals to new mums of Cromwell. For more info, to register for the service or become a volunteer. Please visit www.mealsformums.weebly.com or Caroline Meyer: 027 226 2990 or Sarah Dickie: 021 082 91233

Meditation - Every Tuesday at 8.30am at St Andrews Church, cnr of Donegal & Blyth Streets. Ph: 021 0322 552 for more information

Mini Gym - Play gym for under 5's at Cromwell Squash Clubrooms, Nepulsultra St. Mon mornings 9.30am - Crawlers & wobbly walkers only (up to 2 years). 10.30am - mixed age 2, 3 & 4 yr olds including younger siblings. All families & visitors welcome. 445 0632

Narcotics Anonymous - Wednesday 6pm at the Cromwell Community House, 5 Murray Tee, Cromwell. Ph 0800 628 632

NZ Vintage Car Club Inc, Central Otago - Monthly meetings 8pm 2nd Wed of the month at the VCC Clubrooms, Litany St, Cromwell. Interested members of the public welcome. Enq John 445 0598 / Lindsay 445 0065

Patchwork Group - Thurs 9.30am, Clubrooms, 44b Inniscort St, new members welcome. Enq: Sandra 445 1428 / Chris 445 8332

Plunket Preschool Playgroup - Mon, 10am, for children aged 0-5yrs, Plunket Rooms. Enq Kim 027 771 9831

Pre-school Rhythm & Dance - Tuesdays 10.30 am @ Cromwell Presbyterian Church, Elspeth St. Gold coin donation. Enq to Jan 445 4571

Salsa Cromwell - Wednesday evenings, Bannockburn Hall. Class and Social Dance Enq Gina 022 237 6206 Facebook: Salsa Cromwell

Stay & Play Playgroup - Every Thursday morning 9am -11am. Age 0-5years welcome. Cromwell Kindergarten, 25 Gilling Place, Cromwell. Ph: 445 0530. cromwell@kidsfirst.org.nz

Tarras Yoga - all levels yoga for men and women at Tarras Hall, 7 - 8.30pm every Tuesday. Turn up! Or call Jennifer 022 0974 596

Ukes.Crom - Newcomers welcome, Enq Bill 027 248 1000

Volunteering Central - Supporting & connecting volunteers & volunteer organisations. Contact kirsty@volunteeringcentral.org.nz or call 027 506 5777. www.volunteeringcentral.org.nz

Church Notices

Cromwell Presbyterian Church - 10 Elspeth St, Cromwell (along from New World). Sun services: 9am - Traditional Service, 10am - Morning Tea, 10.30am - Family Service & Children's Program. Enq 445 3078, E: office@cromchurch.co.nz, www.cromchurch.co.nz

St Andrew's Anglican Church - Tues 10am, Sun 9am, everyone welcome, Cnr Blyth & Donegal St. Rev Damon Plimmer 443 2440

Meditation - Every Tues 8.30am at St Andrews Church. Cnr Donegal & Blyth St. For more info ph 021 0322 552

Tarras Community Church - 2nd Sun of the month at 11am

WW Wellness Studio (formerly Weight Watchers) - Presbyterian Church, every Tues, 6pm. Ph 021 125 1442

Yoga Studio Cromwell - Daily, Yoga & Men's. P 021 947 056 or www.yogastudiocromwell.com

Up Coming

Cinema65 - The film, a cuppa of choice and a sweet for \$10 flat fee (for over 65s). Bookings essential as the sessions are usually sold out! Ph 445-8175. Doors open at 1pm for a 1:30pm start. The cinema entrance is ramped and there is a handicapped toilet. Next films: 12th Dec: Eye in the Sky; 9th Jan: Bohemian Rhapsody

The Cromwell Kilwinning Lodge 98 - 2nd Wed in the month, 7.30pm

Wednesday 20th November - Care and Friendship - A light-hearted day out with senior people. All are welcome to come between 11am and 3pm at the Catholic Hall, Sligo St. Cost for the day is \$8. For transport and further information phone Noeline on 445 1157

Wednesday 20th November - Cromwell U3A - at the Town & Country Club, 10am to noon. Trish O'Neill "Reflections on my nursing experience of those receiving end of life care". Cost \$5. Please book at REAP 0800 267 327

Church Untamed - Sunday Service 10am College Auditorium. Family Friendly and All Welcome! Contact Ps Ray Thomson for more info 021 284 6149 www.churchuntamed.nz

The Irish Martyrs Catholic Church - Sligo St, Cromwell. Mass times: 1st, 3rd & 5th Sun of the month: 11am. 2nd & 4th Sun of the month: 9am

Lakeside Christian Centre - Sun, Lowburn Community Church, 10.30am. Enq Pastor Bruce West 027 450 7618

Heart of Fire Christian Church - Sun 5pm Anglican Church Hall, Cnr Blyth & Donegal St. Ministering in the Healing Wholeness & Power of God. Pastor Tim 027 556 6443

OPEN HOMES

LJ Hooker

(03) 445 1261
26 The Mall, Cromwell

Saturday 23 November 2019

1.00-1.30pm 7 The Dunes Negotiation

Harcourts Cromwell

Ph 03 445 1155
70 The Mall, Cromwell

Saturday 23rd November 2019

10am	27 Cairnmuir Crescent	\$975,000
11am	26a Terrace s Street	
11am	21 Neason Place	\$1,275,000
12pm	9 Stowell Drive	\$759,000
12pm	11 Waenga Drive	
12pm	48 Gair Avenue	
1pm	76 Inniscort Street	\$590,000
1pm	51a Missy Crescent	
1pm	29C Melmore Terrace	
1.45pm	76 Gair Avenue	\$699,000
2pm	6 Westmorland Place	
2.30pm	30 Smitham Drive	
3pm	172 Waenga Drive	Neg Over \$850,000
3.15pm	7 Antimony Crescent	
4pm	9 Hosking Drive	\$785,000
5pm	8 Boyne Place	\$615,000

BAYLEYS

45 The Mall, Cromwell
Ph (03) 445 3458
Licensed under the REAA 2008

Saturday 23 November 2019

10.30-11.30am 11A Carlow Place, Cromwell \$595,000

Sunday 24 November 2019

11.00-11.30am	5 Magnetic Place, Cromwell	\$795,000
11.00-12.00pm	7 Pit Lane, Cromwell	\$740,000 + GST (if any)
12.30-1.30pm	37 Ferry Lane, Pisa Moorings	Deadline
2.00-2.30pm	21 Terrace Street, Bannockburn	\$1,250,000
3.00-3.30pm	23 The Dunes, Cromwell	PBN

first national REAL ESTATE Cromwell

Ph 03 445 1748
1 The Mall, Cromwell

Saturday 23rd November 2019

11am	8 Pisa Moorings Road	By Negotiation
12noon	2 Hall Road	Deadline
12noon	7 Hopgood Place	Deadline
1pm	7 The Dunes	By Negotiation
1pm	30 Smitham Drive	\$620,000
1-2pm	46 Sunhaven Cove	Deadline
2pm	11 Foster Place	\$1,480,000
2pm	28 Pisa Moorings Road	Deadline
3pm	11 Olds Crescent	\$815,000

Sunday 24th November 2019

12noon	7 Hopgood Place	Deadline
1pm	103A Molyneux Avenue	\$420,000
1pm	7 Sarita Place	Deadline
2pm	45A The Dunes	Buyer Enquiry Over \$739,000

CEM

CROMWELL ENGINEERING & MAINTENANCE

SERVICING & REPAIRS OF VINEYARD, ORCHARD, FARM MACHINERY & EQUIPMENT

General light engineering / House beams
Steel pergolas / Homologated full & hall rollframes
Now offering stainless and alloy tig welding

M. 027 2411 240 P. 03 445 4101 E. cromwellengineering@xtra.co.nz
12 Rogers Street, Cromwell

CROMWELL GARDENLAND

OPEN 7 DAYS A WEEK

For all your GARDEN & IRRIGATION supplies & services

80 Barry Ave, Cromwell Ph/Fax: 03 445 0667

Orbit IRRIGATION

Hunter THE IRRIGATION INNOVATORS

hunter & craig ARCHITECTURAL DESIGN

derek craig 027 561 0596

- Architectural Draughting Services
- House Plans, Alterations & Commercial Projects
- Architect available to help you with your design ideas
- Consenting & Council Documentation
- 3D Imaging of your projects

Fulton Hogan

Landscape and Garden Supplies Alexandra

WE HAVE MOVED!

Fulton Hogan Landscaping and Garden Supplies has relocated from the Ngapara Street site to our purpose built yard at 113A Dunstan Road, opposite the netball courts.



We can offer:

- Garden composts
- Landscaping schists
- Cement products
- Crusher dust
- Bark chips
- Plastering and blocklaying sands and more
- Screened topsoil
- Builders mix
- EZ Street Cold Asphalt
- Pea straw
- Decorative gravels

Opening Hours:
Monday to Friday 7:00am - 5:00pm
Saturday 8:00am - 12:00pm

Contact us:
113A Dunstan Road, Alexandra
Phone: +64 3 440 0500
Email: info@fultonhogan.com
www.fultonhogan.com

Where will 2020 take you?

Fabulous deals on cruises, airfares, tours...

SEE YOUR EXPERIENCED CRUISE & TRAVEL SPECIALISTS

DEBBIE BRADFORD

P. +64 3 445 3346

0800 800 807

M. +64 21 782 840

E. debbie@privatetravel.co.nz

TAANZ approved Travel Brokers of The Private Travel Company



INTRODUCING



FOR ALL YOUR DOMESTIC AND COMMERCIAL GARAGE DOOR NEEDS

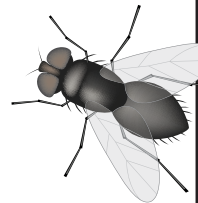
CONTACT DAVE WOODS

p: 03 409 2869 m: 027 3511 635 e: dave@windsordoorsslakes.co.nz

www.windsordoorsslakes.co.nz

Spring is here

which means spiders & flies will be too!



- Get your property treated by our qualified technicians
- If it crawls or flies we can treat it!
- Approved pest control solutions

Find us on Facebook



P.O Box 70, Cromwell 03-445-3329 027-251-5147
info@advancedcarpet.co.nz www.advancedcarpet.co.nz



Resource Consents

Surveys and Boundary Adjustments

Civil Engineering

Landscape Design

Site Surveys Building Setouts

3a Donegal Street

Cromwell

Call 03 928 6021

Email info@blg.nz

BASELINEGROUP

PLANNING | SURVEYING | ENGINEERING | WWW.BLG.NZ



NEED A RESOURCE CONSENT? COME AND SEE THE TEAM AT SOUTHERN PLANNING GROUP

SPG undertakes resource management planning work throughout the South Island, with a particular focus on the Queenstown Lakes and Central Otago regions.

Subdividing or developing your property?
Come to Southern Planning Group for accurate,
independent and high quality planning advice.

Open 8:30am to 5:00pm or by appointment
1 The Mall, Cromwell

Sean Dent ■ 021 946 955
sean@southernplanning.co.nz
Jake Woodward ■ 022 315 8370
jake@southernplanning.co.nz

www.southernplanning.co.nz



Resource Management Consultants

AWS LEGAL

can assist with all your legal requirements

RURAL LAW / BUSINESS LAW / WILLS
TRUSTS AND ESTATE PLANNING
CIVIL LITIGATION / FAMILY LAW
DISPUTE MANAGEMENT AND RESOLUTION
EMPLOYMENT LAW / PROPERTY LAW

Our office at **Unit 8, CromTrade,**
Cnr Barry Ave & McNulty Rd is open
weekdays 8am to 5pm or by appointment.

Unit 8, CromTrade
2 McNulty Road, Cromwell
PO Box 531
P: 03 445 4111
E: cromwell@awslegal.com

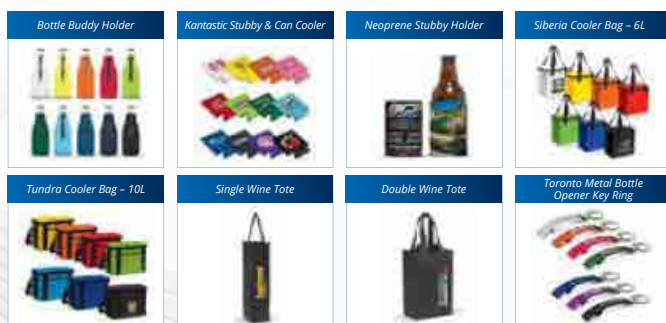
www.awslegal.com



Get organised

with **Customer/Client and Staff Christmas Gifts**
now so when the festive time rolls around
you'll be all set to go!

Below are a selection of ideas ready to be branded with your business name.
Contact us to see the full range of merchandise available in our catalogue.



Contact us today to discuss your options

03 445 0443
cromwellsales@quantumprint.co.nz
2A Traders Lane, McNulty Rd, Cromwell
www.quantumprint.co.nz



"It's a
Tuesday
thing"

\$1

ICE CREAMS

Every Tuesday in November

www.nightnday.co.nz
Limit one per person. Terms and conditions apply.

The presence of a
DESSERT STOMACH
is scientific fact

\$3 **\$3 Desserts**
every day this month
Available in-store only,
while stocks last of participating stores.

Range includes: Cheesecakes,
Mousse, Trifle, Pavlova, Banoffee
Pie, Fruit Salad and Jelly.



Night 'n Day

OPEN 7 DAYS A WEEK
365 DAYS OF THE YEAR
6am - 10pm

35 Jollys Road, Cromwell
03 445 1088